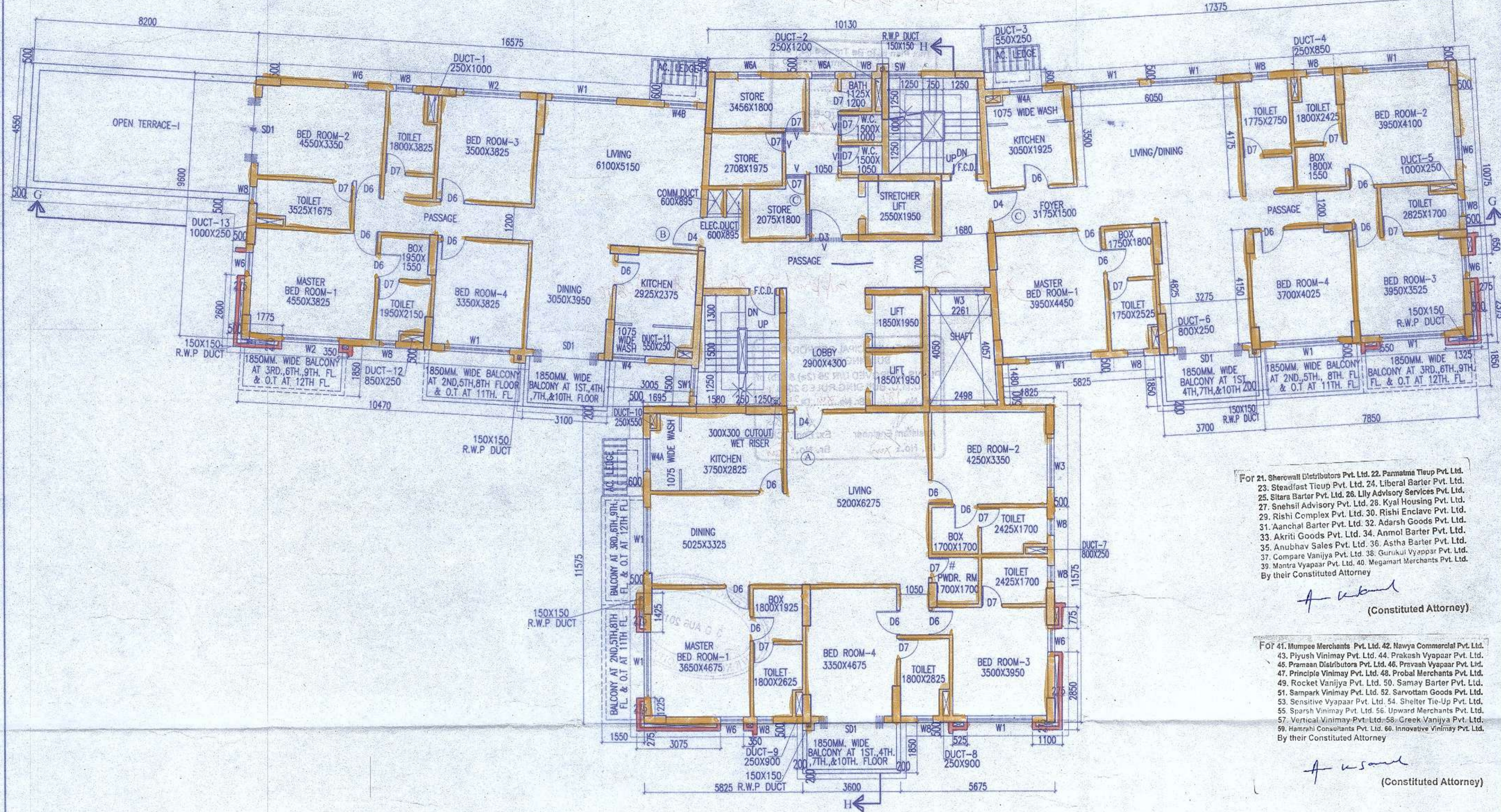
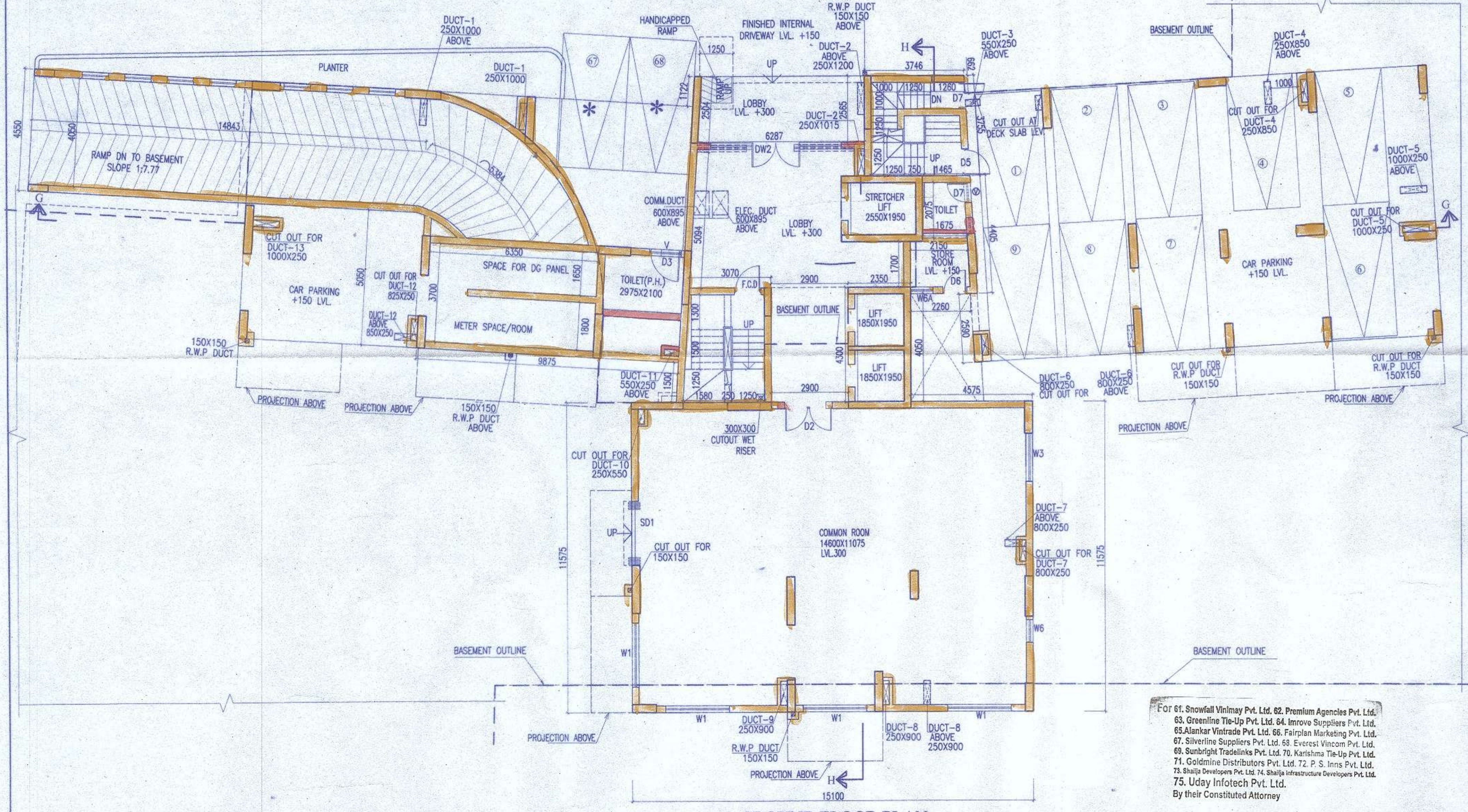


PARTY COPY



FIRST FLOOR PLAN



GROUND FLOOR PLAN

SCHEDULE OF DOOR & WINDOW :-			
NO	SILL	LINTEL	SIZE
DW1	-	2450	9450X2450
DW2	-	2450	4920X2450
DW3	-	2450	5350X2450
DW4	-	2450	4995X2450
DW5	-	2450	3850X2450
DW6	-	2450	3150X2450
DW7	-	2450	3200X2450
DW8	-	2450	3000X2450
DW9	-	2450	2850X2450
D2	-	2150	1800X2150
D2A	-	2450	1800X2450
D3	-	2150	1200X2150
D4	-	2150	1100X2150
D5	-	2150	1000X2150
D5A	-	2150	1075X2150
D6	-	2150	900X2150
D6A	250	2300	900X2050
D7	-	2150	750X2150
SD1	-	2150	2400X2150
SD2	-	2150	2100X2150
SD3	-	2150	1800X2150
F.C.D	-	2150	1000X2150
SW	350	2150	1200X1800
SW1	350	2150	1000X1800
SW2	350	2150	850X1800
SW3	350	2150	1200X1400
SW4	350	2150	1125X1200
SW5	350	2150	1125X1800
W1	350	2150	2400X1800
W1a	350	2150	2250X1800
W2	350	2150	2100X1800
W3	350	2150	1800X1800
W4	1100	2150	1200X1050
W4A	350	2150	1200X1800
W4B	350	2150	1200X1800
W5	350	2150	1050X1800
W5A	1100	2150	1050X1050
W5B	350	2150	1050X1800
W6	350	2150	850X1800
W6A	950	2150	850X1200
W6B	950	2150	850X1200
W6C	350	2150	600X1800
W6D	1200	2150	850X950
W7	350	2150	700X1800
W7A	350	2150	725X1800
W8	1250	2150	600X900
W8A	350	2150	700X1800
W8B	1250	2150	575X900
F.G.	350	2450	(1700+2150)X2100

For 21. Sherwall Distributors Pvt. Ltd. 22. Pannalata Tirop Pvt. Ltd. 23. Standant Tirop Pvt. Ltd. 24. Liberal Barter Pvt. Ltd. 25. Silars Barter Pvt. Ltd. 26. Lily Advisory Services Pvt. Ltd. 27. Snehill Advisory Pvt. Ltd. 28. Kyal Housing Pvt. Ltd. 29. Rishi Complex Pvt. Ltd. 30. Rishi Enclave Pvt. Ltd. 31. Aanchal Barter Pvt. Ltd. 32. Adarsh Goods Pvt. Ltd. 33. Akriti Goods Pvt. Ltd. 34. Anmol Barter Pvt. Ltd. 35. Anubhav Sales Pvt. Ltd. 36. Astha Barter Pvt. Ltd. 37. Compare Vaniya Pvt. Ltd. 38. Gurukul Vyapar Pvt. Ltd. 39. Mantra Vyapar Pvt. Ltd. 40. Megamart Merchants Pvt. Ltd. By their Constituted Attorney

(Constituted Attorney)

For 41. Impose Merchants Pvt. Ltd. 42. Navya Commercial Pvt. Ltd. 43. Piyush Vinimay Pvt. Ltd. 44. Prakash Vyapar Pvt. Ltd. 45. Praman Distributors Pvt. Ltd. 46. Pravaah Vyapar Pvt. Ltd. 47. Principle Vinimay Pvt. Ltd. 48. Probal Merchants Pvt. Ltd. 49. Rocket Vaniya Pvt. Ltd. 50. Samay Barter Pvt. Ltd. 51. Sampark Vinimay Pvt. Ltd. 52. Sarvottam Goods Pvt. Ltd. 53. Sensitive Vyapar Pvt. Ltd. 54. Shelter Tie-Up Pvt. Ltd. 55. Sparsh Vinimay Pvt. Ltd. 56. Upward Merchants Pvt. Ltd. 57. Vertical Vinimay Pvt. Ltd. 58. Greek Vaniya Pvt. Ltd. 59. Harshat Consultants Pvt. Ltd. 60. Innovative Vinimay Pvt. Ltd. By their Constituted Attorney

(Constituted Attorney)

ABOVE LINTEL
For 1. Clarity Barter Pvt. Ltd. 2. Himadri Tirop Pvt. Ltd. 3. Kalyan Agency Pvt. Ltd. 4. Anurag Engneer Pvt. Ltd. 5. Anurag Hirise Pvt. Ltd. 6. Gurukul Consultant Pvt. Ltd. 7. O.P. Bhandari & Associates, Siddharth Advisory Services Pvt. Ltd. 8. Uplink Commercial Pvt. Ltd. 9. Umesh Infrastructures Pvt. Ltd. 10. Khazana Tirop Pvt. Ltd. 11. Shree Vinayak Villa Pvt. Ltd. 12. Umahala Hirise Pvt. Ltd. 13. Kyal Promoters Pvt. Ltd. 14. Kyal Realstate Pvt. Ltd. 15. Kyal Residency Pvt. Ltd. 16. Kyal Complex Pvt. Ltd. 17. Kyal Realtors Pvt. Ltd. 20. Lakshya Distributors Pvt. Ltd. By their Constituted Attorney

(Constituted Attorney)

CERTIFICATE OF STRUCTURAL ENGINEER.

THIS IS TO CERTIFY THAT THE STRUCTURAL DESIGN AND DRAWINGS OF BOTH FOUNDATION AND SUPER STRUCTURE OF THE BUILDING HAS BEEN MADE BY ME CONSIDERING ALL POSSIBLE LOADS INCLUDING THE SEISMIC LOAD AS PER THE NATIONAL BUILDING CODE OF INDIA AND CERTIFIED THAT IT IS SAFE AND STABLE IN ALL RESPECTS SOIL TEST REPORT IS PREPARED BY: M/S BOSE ENGINEERS OF - 74/1, SULTAN ALAM ROAD, KOLKATA-700033

SANJIV J. PAREKH
M.E. (STRUCT.), B.C.E. (PGCGM),
C. (ENG)-I, MISC. ASCE, FIE (F-016020-4)
E.S.E. No. 104 (I) K.M.C.

SIGNATURE OF STRUCTURAL ENGG.

SANJIB GUHA
BSC BGE FIE (F-115654-5)
CHARTERED ENGINEER
ENLISTED STRUCTURAL
REVIEWER 88/16 K.M.C.

SIGNATURE OF STRUCTURAL REVIEWER

CERTIFICATE OF ARCHITECT.

I DO HEREBY CERTIFY WITH FULL RESPONSIBILITY THAT THE BUILDING PLAN HAS BEEN DRAWN UP AS PER K.M.C. BUILDING RULE-2009 AS AMENDED FROM TIME TO TIME THAT THE WIDTH OF THE ABUTTING ROAD CONFORM WITH THE PLAN AND IT IS A BUILDABLE SITE NOT A TANK OR A FILLED UP TANK. THE SITE PLAN KEY PLAN AGREES WITH THE SITE. THE PLOT IS DEMARCATED BY BOUNDARY WALLS & MEASUREMENTS TALLY WITH THE REGD. DEED PLAN. THE EXISTING STRUCTURE AS SHOWN FULLY OCCUPIED BY OWNERS AS PER OWNERS UNDERTAKING.

JAY PRAKASH BHARAT KUMAR AGRAWAL
B. Arch., A.I.I.A.
Reg. No. CA / 88 / 10029
ARCHITECT & S.L. NO. - 321(A)

SIGNATURE OF ARCHITECT.

TITLE-	GROUND FLOOR PLAN	BLOCK - 4
PROJECT-	FIRST FLOOR PLAN	
PLAN SHOWING CHANGES	U/R 26(a) & (b) OF KMC BUILDING RULE-2009 OF RESIDENTIAL COMPLEX WITH BLOCK-1 (G-XI), BLOCK-2 TO 4 (B-G-XII) AND BLOCK-5 (B-G-XI) AT PREMISES NO. 49A, MONMOHAN BANERJEE ROAD, KOLKATA-700 038, WARD NO. - 118, BOROUGH - XIII, P.S. - BEHALA, SANCTIONED VIDE B.P. NO. 2017/130182 DATED 16/12/2017, SUPERSEDING B.P. NO. 2015/130848 DATED 18/05/2015	
ARCHITECTS	AGRAWAL & AGRAWAL BARODA KOLKATA	
SCALE	DATE	DEALT
1:100	05.07.18	PALLABI
CHECKED		SHILA

For 61. Snowfall Vinimay Pvt. Ltd. 62. Premium Agencies Pvt. Ltd. 63. Greenline Tie-Up Pvt. Ltd. 64. Impove Suppliers Pvt. Ltd. 65. Alankar Vintrade Pvt. Ltd. 66. Fairtran Marketing Pvt. Ltd. 67. Silverline Suppliers Pvt. Ltd. 68. Everest Vincom Pvt. Ltd. 69. Sunbright Tradelinks Pvt. Ltd. 70. Karishma Tie-Up Pvt. Ltd. 71. Goldmine Distributors Pvt. Ltd. 72. P. S. Inns Pvt. Ltd. 73. Shajila Developers Pvt. Ltd. 74. Shajila Infrastructure Developers Pvt. Ltd. 75. Uday Infotech Pvt. Ltd. By their Constituted Attorney

(Constituted Attorney)

PARTY'S COPY No. :- 24/35
008/U/R-26 (2a) (2b) (2c) (2d) 18-19 dt-30/08/18

This Plan is to Be Treated As Part
And Parcel And Contiguous To
B.P. No. 182 dt. 22/12/17
Dated: 30/08/18
Ex. Engineer (C-8)
Br. No.: 214

Approved as per approval of K.M.C. dt-24/08/18

KOLKATA MUNICIPAL CORPORATION
BUILDING DEPTT.
PLANS APPROVED U/R 26 (2a) & (2b) of
C.M.C. BUILDING RULES 2009
B.P. No. 182 dt. 22/12/17
Assistant Engineer Ex. Engr. (Civil)
Br. No.: 214 Br. No.: 214

BUILDING DEPARTMENT
30 AUG 2018
THE KOL. MUNICIPAL CORP.

Digitized by Srujanika@gmail.com